

OCTOBER 2008

Wednesday, 22 October 2008

Do You Shop On Line?

If the answer is "YES",

why not help either the school or the PTA by using either:
"www.easyfundraising.org.uk" or " www.buy.at/ourschoolstalbans"

The sites have links to shops like; Asda, John Lewis, ToysRus, Body Shop and many, many more.

Each site has a "Price Promise", buy.at that states, "You pay exactly the same price as on the retailers main sites, often lower than on the high street.." The school will earn commission from the retailers out of their profit margin.

So how does it work?

Go to the above sites:

At **buy.at/ourschoolstalbans** go to the, "Become a member" icon and follow the link, complete the information. Any shopping purchased here will support the school.

At **easyfundraising.org.uk** go to the, "register as a user", link. This takes you to a registration form, the first line of which asks you to complete which cause you support. Enter "St Alban's Catholic Primary School PTA" press search then tick the button "please choose" ~ at the moment there is just one ~ ourselves. Complete the rest of the details.

Once you are registered you don't need to complete the details again. Now you can shop!

Donations to the school vary from a flat rate ~ Direct Line Home Insurance donation of £50, to a percentage rate Hewlett Packard orders 4%.

But what happens if I don't shop on line?

Have a go! Or just visit the site. Maybe you can pass on the details to relatives and friends any support will be gratefully received.

Inside this issue:

Fund Raising	1
Reception Admission	2
Building Fund	2
Secondary Transfer	2
Vouchers	2
Clothes	3
Learning Logs	3
ICT Evening	3
Jewellery	3
Christmas Dinner	3
PTA Events	4
Whole school closures	4
Diary Dates/Whole School Closures	4

Special Points

- Parents' Evening Thursday 23rd October
- Whole School Closure Friday 24th October



RECEPTION ADMISSION 2009

Parents whose children will be aged 5 between September 1st 2009 and August 31st 2009 will need to complete a Common Application Form, a similar system to Secondary transfer. Forms will be available from Wednesday 5th November. For admission to a Catholic School, parents will need to complete a separate supplementary form as well.

Applications should be returned to Derby City by Friday 19th December 2008.

GOVERNORS BUILDING FUND



Thank you to all the parents who have replied and sent in donations for this years building fund.

So far we have received just over £600, if you have not yet got round to completing the form or have mislaid it, we do have spares.

TRANSFER TO SECONDARY EDUCATION 2008

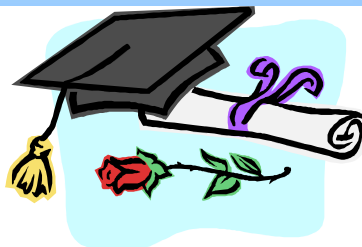
Parents of year 6 children should now have received information regarding secondary transfer. The closing date for applications is 27th October 2008.

It is possible to apply online at www.derby.gov.uk/onlineadmissions.

Please return all application forms to Derby City.

It is vital that all deadlines are kept to.

If you have used the online application form, on National Offer Day (1st March 2009) you can log into your account and see which school your child has been offered.



VOUCHERS

We are collecting all sorts of vouchers at the moment ~ Morrisons: Let's Grow; Nestle: Book Vouchers; and any others that you come across!

The Times and Sunday Times will be publishing tokens for books in the New Year ~ which are also signing up for.

So please keep on collecting, thank you.

Children's Corner

Which famous footballer is hidden in these letters?

ADLNOOR

Fax 01332 671498



Clothes ~ Labelling

Already this term we have had a number of lost clothes plus quite an assortment of clothing that has been left in school. It would be very helpful to the staff and children if all items of clothing were labelled especially coats, now that the cold and wet weather is with us.

Thank You

Learning Logs

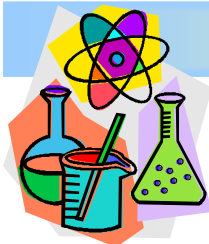
Thank you for your support with your children's learning logs. Some of the children have worked really hard with these and produced some outstanding work. Parents are allowed to support their children with their work, it is not seen as the child cheating.

Just a reminder:

- The Learning Logs are **given out** to the children **every Wednesday**.
- They are **collected** back in the **following Monday**.
- The Learning Logs will follow the same distribution and collection procedure throughout the school so that we have continuity from class to class and year to year.



ICT Information Evening



Thank you to Mrs Muldoon, the staff, the children and the parents who came along to the ICT Curriculum meeting on Wednesday 8th October.

We will be holding another Information Evening on **Wednesday 11th February** this time it will be based around the **Science Curriculum**.

REMINDER ~ JEWELLERY ~ REMINDER

Due to health and safety all jewellery must be removed for PE, games and swimming. If your child cannot remove their own jewellery please keep any items at home on the days when they are going to have these lessons.

Christmas Dinner

Please return this portion of the Newsletter

My child/ren normally stay sandwiches

I would like my child/ren to stay for Christmas lunch on Thursday 11th December. I will pay for their lunch (£1.55 each child) on Monday 10th December.

Number of children:

Name's of child/ren: _____ Class: _____

_____ Class: _____

_____ Class: _____

Parent's Name

Parent's Signature

PTA EVENTS

At the last PTA meeting a new committee was formed. A number of events have been arranged, please come along and support the hard working group.

Tuesday 4th November	PTA meeting	7:30 pm school library
Date to be organised	Christmas Disco	

Whole School Closures

The following dates have been set for whole school staff training:

Friday 24th October 2008 Friday 13th February 2009
 Friday 13th March 2009 Monday 15th June 2009

Diary Dates

NOVEMBER

Tuesday 4th	Year 1 visit to Sudbury Hall	all day
	PTA meeting	7:30
Tuesday 11th	Year 2 visit to Sudbury Hall	all day
Friday 14th	Whole School Liturgy Mrs Tidbury's Class	10:15 Infant Hall
Thursday 20th	Skipping Workshop	
Friday 21st	Skipping Workshop	
Thursday 27th	Tempest Individual Photos	
Friday 28th	Whole School Liturgy Mrs Needham's Class	10:15 Infant Hall

DECEMBER

Friday 5th	Whole School Liturgy Miss Ziomek's Class	10:15 Infant Hall
Friday 19th	End of Term	

Christmas Dinner Return